



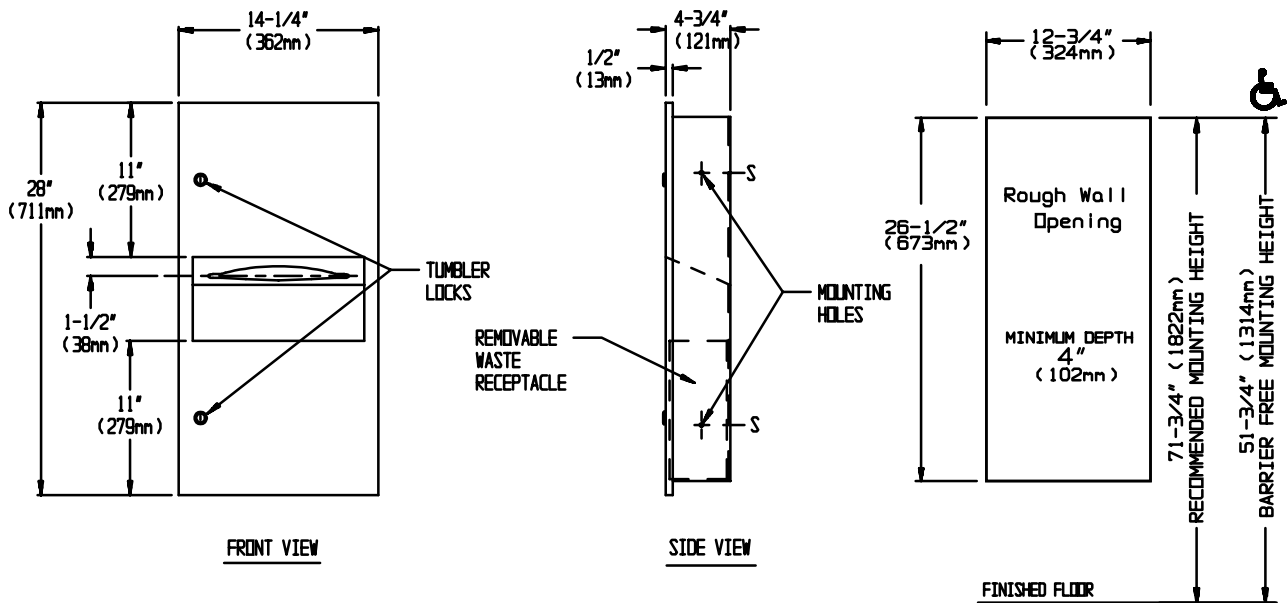
AMERICAN SPECIALTIES, INC.
441 Saw Mill River Road, Yonkers, NY 10701 (914) 476-9000

MODEL No: 64623

ISSUED: 1-87

REVISED: 4-03

RECESSED PAPER TOWEL DISPENSER AND WASTE RECEPTACLE



SPECIFICATION

Recessed Paper Towel Dispenser and Waste Receptacle shall hold and dispense 475 standard multi-fold or 350 standard C-fold paper towels and shall have a waste capacity of 2.2 gal. (8.4 liters). Cabinet, door, dispenser, and waste receptacle shall be fabricated of alloy 18-8 stainless steel, type 304. Cabinet shall be N°20 gauge with a 1" (25mm) wide perimeter trim to lay flush against wall and shall have no exposed fastening devices. All exposed surfaces shall have a N°4 satin finish and shall be protected by a PVC film easily removable after installation. Door shall be N°18 gauge and shall be attached to the cabinet body with a full length 3/16" (5mm) dia. stainless steel multi-staked piano hinge, and shall be held closed with a tumbler lock keyed alike to other ASI washroom equipment. Towel dispensing slot shall have a fully deburred edge for snag free dispensing and user safety. Waste receptacle shall have a rolled edge finger hole for easy servicing and removal.

Recessed Paper Towel Dispenser and Waste Receptacle shall be Model N°64623 as manufactured by American Specialties, Inc., 441 Saw Mill River Road, Yonkers, New York 10701-4913

INSTALLATION

Unit is mounted in wall recess with N°10 self-tapping screws (by others) through concealed mounting holes provided. Note that top of rough wall opening is 3/4" (19mm) below top of unit.

Rough Wall Opening required is..... 12-3/4"W x 26-1/2"H x 4"-D. minimum (324mm x 673mm x 102mm)

OPERATION

Towels are self feeding until supply is depleted. Unit will continue to feed properly when reloaded with a partial load in place. Waste receptacle is emptied manually on a cycle determined by maintenance needs. Locked door prevents unauthorized access or removal.