

**SOFT DOWN STAY TYPE SDS-100 & SDS-C100 LAMP®**

Please follow these instructions carefully for proper use. PAT. P (Japan & many other countries)

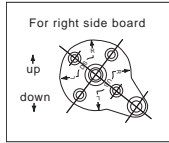
**HOW TO INSTALL AND LOCATION OF MOUNTING PLATES**

**● PLATE POSITION FOR INSTALLATION**

Depending on the type of the hinges used, the position of the mounting plate and arm fixing plate should be fixed as indicated below. Each distance for A/B/C is measured from center of butt hinge. In case drop hinge (SDH-001) used, they are from the flap edge.

	A	B	C
Butt Hinge (one axis)	100mm	135mm	218mm
Drop Hinge (SDH-001)	107mm	142mm	225mm

When other type hinges are used, please contact our sales staff.



To use SDS-100 (without catch type), a catching device is recommended.

The installation direction of the mounting plate (Type SDS-100 follows the inscription of "DS"). For right side fixing, the arrow of "R" on the DS side should point upward vertically. For left side fixing, the arrow of "L" on the DS side should point upward vertically.

**● HOW TO INSTALL**

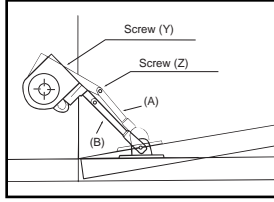
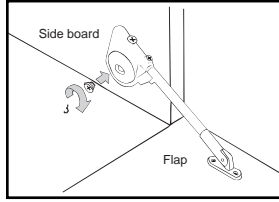
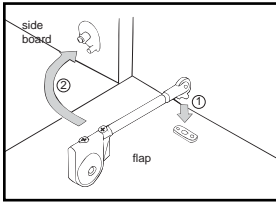
Install the mounting plate and arm fixing plate with the enclosed wood screws at the designated places.

Insert the "key" of the cam of arm-tip into the key hole of the fixing plate. The main body must be placed at 90 degrees angle against the fixing plate.

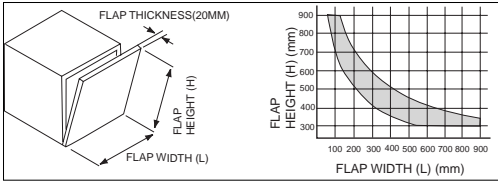
- Turn the main body 90 degrees and insert the knurly axis of the mounting plate to the hole of the main body.
- Then fix the main body with bind screw attached.

**● ADJUSTMENT**

When slower opening of the flap is desired, turn the speed adjustment screw (Y) clock-wise. If the door is in the position as shown below (A), turn the opening angle adjustment screw (Z) so that the arm can stretch in a straight line as shown (B).



**THE DIMENSION OF THE FLAP**



**THE DIMENSION OF THE FLAP**

SOFT DOWN STAY must be used taking the size of the flap into consideration. The graph indicates the usable range when using one SDS stay. When using two stays, the width of flap can be twice as large if the height remains unchanged.

(Note) The graph shown to the left is in case of a usual wooden flap of 20mm thick (specific gravity approx 0.5)

- In case of lighter or heavier flap doors that do not fit within the above specified range please contact our sales staff.

**MATERIAL AND FINISH**

Material: Plastic and steel Finish: Nickel plated (steel)

**REMARKS**

- To avoid serious damage and/or injury, do not attempt to disassemble the body of SDS stay.
- Please contact our sales staff when you use LAPCON series products under extreme high and or low temperature
- Dimension and specification can be changed with or without notice.

**SUGATSUNE KOGYO CO .LTD.**

1-8-11, HIGASHIKANDA, CHIYODAKU, TOKYO, 101-8633, JAPAN  
 PHONE :81 3-3866-2260  
 TELEX :J28289 LAMP  
 FAX :813-3866-4447

**SUGATSUNE AMERICA INC.**

221 EAST SELANDIA LANE, CARSON, CALIFORNIA, 90746, U.S.A.  
 PHONE :(213)329-6373  
 TOLL FREE :(1-800)562-LAMP  
 FAX :(213)329-0819

